

# Clansman PRC-350 Repair Tips

## Construction

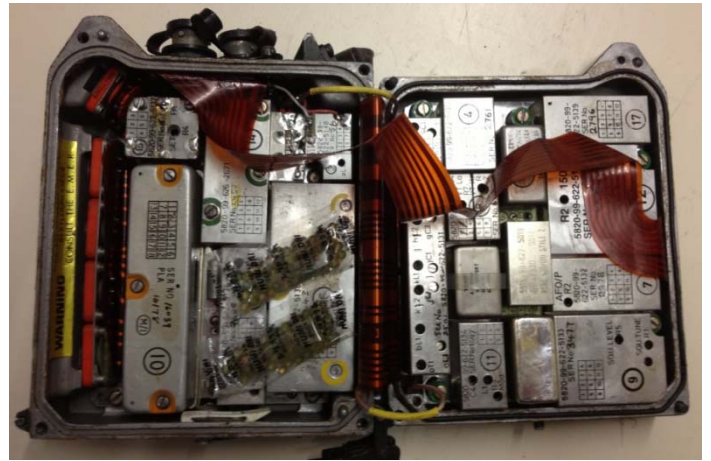
Chassis comes in two halves, radio consists of sixteen modules, all removable by de-soldering all their pins once radio is apart.

## Taking it apart



Unscrew the four alan head screws. Do not remove them from the case, they are self retaining.

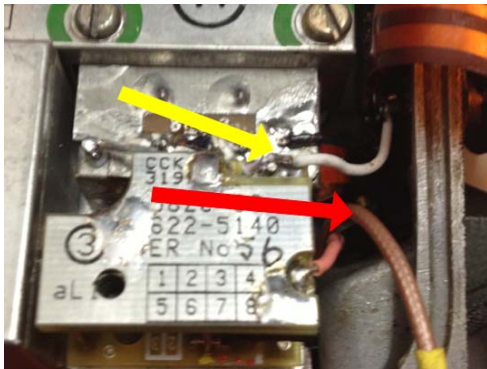
Open the case into two halves and unscrew all the flat head screws with green circles around them (NOT the ones with yellow). There should be thirteen screws in total. Again they are self retaining, so no need to remove them completely. Remove the silica gel packets too.



Gently pull orange flexi to remove modules from half of the outer case.

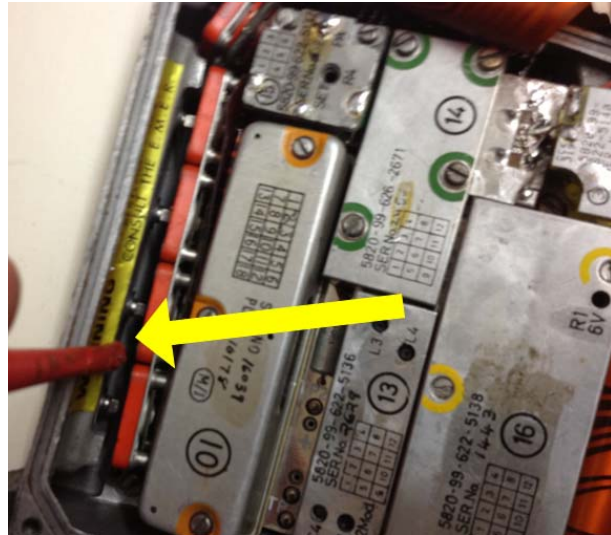
Then remove the eight screws on the on/off and frequency dial switches. Remember what position they are in!





De-solder the white and black wires. Careful remove the brass end from the pink wire, or if you prefer, de-solder that as well.

Gently pull all the guts out by levering the orange frequency dial base with a screwdriver and wiggling it all a bit.



Da-daa! Everything is now out and ready to fit to the test jig (if you have one)

## Test Kit

Info coming soon...

## Circuit diagrams, manuals and fault diagnosis

Info coming soon...

## Common faults and fixes

Power faults can be caused by a blown fuse, just solder some fuse wire back on by opening up the set and locating the plastic insert as shown below (behind the battery terminals)



Steve Slack  
**MØSLK/9H4SS**  
July 2020

[www.clansman-radio.co.uk](http://www.clansman-radio.co.uk)